



Whimple News

Christmas 2024



Find us online:

www.whimplenews.uk



Olde Worlde family run Free house in the heart of Whimpe.

Real Ales.

Local Ciders.

Good Food.

Open 7 days a week 11am -11pm.

Serving food from Wednesday through to Sunday.

Lunch is served from 12pm – 2:30pm Wed – Sat.

Evening meals are served from 5:30pm – 8:30pm Wed –Fri.

Evening meals are served from 6pm - 9pm on sat.

Sunday meals are served from 12pm – 6pm.

Bookings can be made via the phone or through our website.

Christmas opening hours

Monday 23rd - Normal hours - Drinks only

Christmas Eve - Normal hours - Curry Night 5pm - 9pm

Christmas Day - 11am - 1.30pm - Drinks only
Pre-booked dining 2pm - 6pm (see website for details)

Boxing Day - 12pm - 8pm - Drinks Only

Friday 27th - Closed for family time

Saturday 28th - Closed for family time

Sunday 29th - 11am - 10pm - Food served 12pm - 6pm

Monday 30th - 11am - 11pm - Drinks only

New Years Eve - 11am - 1.30am

New Years Day - Closed for family time

Tuesday 2nd January & onwards - Normal hours resume

**WE WOULD LIKE TO WISH EVERYONE A VERY MERRY CHRISTMAS
AND A HAPPY NEW YEAR FROM THE NEW FOUNTAIN INN .**

01404 643730

newfountaininn.com.

Merry Christmas, Whimble News Readers!

As the holiday hustle and endless to-do lists surround us, let's pause and remember that the true magic of Christmas lies in the simplest of moments. It's in the tiny hands decorating cookies, warm hugs by the fire, cold morning walks with your pet, and sipping hot chocolate with friends. In a world that often focuses on material things, it's easy to lose sight of what truly matters. These are the memories worth cherishing - the sweet, imperfect moments that fill our hearts with joy. So, this holiday season, let your home be filled with laughter, love, and the warmth of togetherness, one beautiful moment at a time.

Diary. It seems like an action-packed edition this time with lots going on throughout the month—turn to page 5 for a comprehensive list of what tickles your fancy this festive season!

New Emails Alert! If you would like to advertise your business or send in your written article for your establishment, please send all information to:

whimplenews@gmail.com.

If you would like to add any events to the Whimble diary, please email:

whimpliediary@gmail.com.

Heads up! As we head into winter, please keep a vigilant eye on your surroundings around the village. Devon County Council has reminded us of how to contact them if we need to report any issues such as potholes, faulty streetlights, blocked drains, and other items—check out page 8 for those details.

Dog Mess Alert! A polite reminder: I'm sure that all of us who own dogs are more than responsible by cleaning up after them. However, I did witness an incident where someone allowed their pet to foul outside someone's doorstep and 'forgot' to clear up after them. Please, be a responsible dog owner and ensure you keep our village clean. Remember to be courteous and not leave mess outside people's homes or driveways.

Bill? I, like many others, have wondered where Bill has gone. During this summer, we saw him many times sitting on the bench outside the shop reading his book. Please turn to page 18 for a more in-depth article on where he has gone—we all wish him the very best in his new home.

Christmas! Fancy some Christmas carolling or visiting a reindeer this year? Turn to pages 22 and 23 for information on village carols and Cotley Farm festive events. Maybe a film followed by coffee with friends on Thursday, 19th December—turn to pages 45 and 46 for more info.

Opening Hours. For the festive opening hours at all our favourite village establishments, turn to pages 32 and 33.

Thank you! And with that, I will leave you to read through our wonderful magazine. Thanks to our wonderful Whimble News Team for volunteering your precious time to keep this going throughout the year.

I wish you all a very Merry Christmas and a Happy New Year!

Sam x

Maths & Physics Online Tutoring

GCSE & A-Level

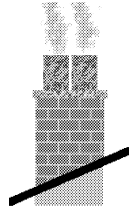
*Personal coaching to suit your needs,
with experienced mathematician.
Member of the Tutor's Association.*

Daytime/ Evening/ Saturdays.

For more information please see my website:
robertpooleymaths.co.uk

Robert Pooley 01404 822333
robertpooleymaths@gmail.com

Chimneys Wood Burners Fires



Swept, Installed, Repaired,
Lined and Built

"All your chimney needs"

Alf Butler

Tel: 01404 811843

A fully insured and HETAS
registered Company

**TRY OUR
PAYMENT PLAN**

3, 6, 9 or 12 months
THE EASY WAY
TO PAY

RIDGE ROOFING



AT THE TOP

Guaranteed
to beat any
genuine
produced
quote

**FOR BOTH
QUALITY
& PRICE**



& SCAFFOLDING SERVICES LTD

ALL ASPECTS OF ROOFING UNDERTAKEN - FROM LEAKY ROOFS TO RE-ROOFS

Ridge Roofing Ltd is a well-established company with over 25 years' experience behind them, working in partnership with most of the leading estate agencies.

- Slating • Tiling • Flat roofing • Fibreglass flat roofs • Chimneys/Leadwork • Turnerized slate roofs • Guttering/uPVC/fascia boards
- Storm damage/insurance work • All grant work undertaken
- Insurance backed guarantees • Full public liability insurance
- Free written quotations • All work guaranteed



T: 01404 891813 M: 07789 555685 • stephen.wattsr@gmail.com • www.ridge-roofing.com

VELUX

RUBBERBOND
FLEECEBACK
EPDM

**CRYSTIC
ROOF**

HAS

**MARLEY
ROOFING**

Redland
ROOFING SYSTEMS

What's On In Whimble

December:

- Sat 7th: History Society Christmas lunch at the Cricket Club ay 12md.
Sun 8th: Holy Communion at Whimble Church at 10am.
Sun 8th: Christmas Cash Bingo at the New Fountain at 7.30pm.
Sat 14th: Front Row Club at the Victory Hall at 7 for 7.30pm.
Sat 14th: Live Music at the New Fountain Inn by Nikita.
Sat 14th: Christmas Special Soup n' Sarnie in the Victory Hall at 12md.
Sun 15th: Christingle Gathering in Whimble Church at 4pm.
Sun 15th: Christmas Quiz at the NFI in aid of Whimble School at 7.30pm.
Mon 16th: Parish Council meeting in the Victory Hall at 7pm. Public welcome.
Tues 17th: Candlelight Yoga in the Victory Hall from 6.30 – 8pm.
Thurs 19th: Community Film and Coffee morning in the Victory Hall: Opens at 10am, 11am film – The Holdovers.
Sun 22nd: Carols by Candlelight. Whimble Church at 6.30pm.
Tues 24th: Christmas Eve Carols in the Square at 7.00pm.
Tues 24th: Midnight Mass in Whimble Church at 11pm.
Wed 25th: Family Service and Holy Communion. Whimble Church at 11am.
Wed 25th: Xmas lunch at the Victory Hall from 12 until 3pm. Free for those in need of company or a meal. To book ring 07525278864.
Tue 31st: New Year's Eve at the New Fountain with Livvy Hilton-Smith.

January 2025

- Sat 4th: Young Farmer's charity Xmas tree collection. Ring Jack 07724 390839.
Sun 5th: Holy Communion in Whimble Church at 10am.
Mon 6th: HS volunteers' get-together at the New Fountain from 11am -12noon.
Thurs 9th: Quiz Night at the Thirsty Farmer at 8pm.
Sat 11th: Front Row Club in the Victory hall at 7.30pm.
Sun 12th: Common Worship and Holy Communion in Whimble Church -10am.
Tues 14th: WI Social afternoon in the Hub at 2pm.
Tues 14th: HMS Pinafore rehearsal at the Whimble Cricket Club. 7.30 – 9pm.
Fri 17th: Whimble Wassail starting from the New Fountain at 6.30pm.
Sun 19th: The Gathering at Whimble Church Coffee, cake, chat and music - 4pm.
Tues 21st: HMS Pinafore rehearsa at the Whimble Cricket Club from 7.30 – 9pm.
Sat 25th: Soup and Sarnie in the Victory Hall from 12md to 1.30pm.
Sat 25th: Traditional hedge-laying skills with Devon Ranger at the MUGA.
Sun 26th: Morning worship in Whimble Church. at 10am.
Tues 28th: HMS Pinafore rehearsal at the Whimble Cricket Club from 7.30 – 9pm.
Fri 31st: History Society talk - *Times of Change: A Brief History of British New Towns* by Alan Lascelles in the Victory Hall at 7.30pm.

February 2025

- Sat 1st: Quiz and curry in aid of Whimble Rre-school in the Victory Hall at 6.15.
Sun 2nd: History Society volunteers' get-together at the New Fountain from 11am -12noon.
Tues 4th: HMS Pinafore rehearsal at Whimble Cricket Club from 7.30 – 9pm.
Thurs 6th: Quiz Night at the Thirsty Farmer at 8pm.
Sat 8th: Front Row Club at the Victory Hall at 7.30pm.



Whimple Stores will be looking for new owners

We appreciate that this headline will cause alarm across Whimple Residents that use and are dependent on the Stores but after considerable discussions between us, we will be listing the shop and its attached buildings with a Commercial Agent in the New Year.

As a background for this momentous decision, Sharon and I purchased Whimple Stores and its buildings three years ago with the intention that my daughter Sabrina would manage the business and live in the house, and I would travel weekly to Whimple from our home in Buckinghamshire to work on improvements to the property. Sharon and I had a longer term plan to move permanently to Devon several years later when Sharon reached retirement age to be closer to our children and grandchildren.

It became clear very quickly that running a village shop requires a significant time commitment and a very diligent eye on expenditure and stock control to ensure that the shop remained successful. We lost a considerable amount of money subsidising the Post Office. To ensure the shop remained in place, Sharon and I closed down our respective self-employment businesses and moved to Devon earlier than planned.

Since then, and over the last year, I have been receiving treatment for cancer and I am not convinced that it is working. Despite external appearances, I am unable to physically cope with the demands of running this form of business and I also feel that having worked virtually non-stop for 56 years, it is time I should be taking life easier.

Sharon has done a marvellous job in taking on the shop and improving its efficiencies, stock management and staff morale. She cannot do this alone however and we cannot envisage a future where one of us is 'taking it easy' while the other is working long days and covering for staff absences.

We know that a sale will take some time to find a buyer through to completion, so we will be around for some time. Our optimum position is that a buyer will be interested in the complete package of the buildings and the shop, but the agent will also forward enquiries from interested parties who wish to lease just the shop part of the property. We will keep you up to date.

Christmas is getting closer

We do think that some supermarkets who started pushing their Christmas stock at the end of summer is a bit ridiculous, so we have held back until after Armistice Day to put our stock of Christmas Cards, wrapping paper, gift tags, money wallets and other items on sale.

If you are sending Christmas presents, we can process pre-paid parcels but would advise getting parcels to us early to ensure that Royal Mail deliver them on time.

We can take advance orders for Christmas food and have access to fresh and frozen meats from our Wholesalers as well as fresh vegetables. Please ask for an order form when you come into the shop.

We will be closed Christmas Day and open from 08:00 to 12:00 on all other public holidays with the usual hours on other days.

Christmas Carols

As last year, we will be open late and will be selling Mulled Wine and Hot Chocolate on Christmas Eve for people attending the Christmas Carols in The Square.

£1 from every cup sold is donated to the Devon Freewheelers Charity. We will also have a facility in the shop where you can make a donation to the Devon Freewheelers using your credit or debit card. We look forward to seeing you.

We would like to thank all of our customers for supporting Whimble Stores and repeat our request to all of Whimble to support your village store wherever possible. A village store is only sustainable if enough people in the village use it.

Sharon, Rory and the team at Whimble Stores

**The Square
Whimble
EX5 2SN**



**01404
822316**

Rory, Sharon and the Team welcome you to our Stores and Coffee Shop for fresh Devon bread, milk, vegetables and eggs. Frozen, fresh and canned foods. Cards, stamps, Gift Cards, stationery and more.

We also provide Parcel sending and collection, bill payments, electricity and phone top-ups, gift cards and cash withdrawals.

Opening Times

Mondays to Fridays	08:00 to 18:00
Saturdays and Sundays	09:00 to 12:00
Public Holidays	08:00 to 12:00

Parish Council



Dince Hill footpath

Following the Council liaising with Devon County Council Highways and Cllr Iain Chubb, works have been carried out on the Dince Hill footpath to repair the damage caused by the roots from the fallen tree.

We are continuing to work to get in touch with the responsible landowner to request that they deal with the part of the tree on their land.

Reporting a problem

As we head into Winter and possible periods of inclement weather, the Parish Council thought it would be helpful to remind people how to report any problems.

Devon County Council is the organisation to contact for any of the following issues:

- Potholes (of a certain size)
- Faulty street lights
- Flooding or blocked drains
- Hazardous or fallen trees
- Blocked access and trip hazards on a public right of way, including footpaths, pavements and cycleways

To make a report, visit the Devon County Council website:

www.devon.gov.uk/roads-and-transport/report-a-problem

In the event of an emergency that is likely to present an imminent threat to life or serious injury, or serious damage to property please telephone 0345 155 1004.

When making a report it is really appreciated if a precise location can be given. The best way to do this is to use the What3words website or app:

<https://what3words.com/>

Neighbourhood Plan and Budget/Precept for 2025/26

The last Parish Council meeting of 2024 takes place on Monday 16th December at 7pm at Whimble Victory Hall. At this meeting the Whimble Neighbourhood Plan and the budget and precept for 2025/26 will be discussed.

The Council will be considering a report outlining the current status of the Neighbourhood Plan, as well as a number of options as to the next steps.

The draft budget and precept was discussed at the meeting on 26th November 2024 but will be returning to the 16th December meeting to finalise income and expenditure for 2025/26, and setting the precept, which forms part of the Council Tax bill each household will pay from April next year.

Community Speedwatch Initiative

As reported in previous editions, enough volunteers have come forward meaning that training with the Police can now be scheduled. If anyone else is interested in volunteering, please get in touch as soon as possible.

Councillor co-option

The Parish Council currently has five vacancies so if you are interested in joining the Council please get in touch.

Website Domain name

The Council is moving across to the gov.uk platform, making everything more secure. So very shortly, the website address will become :

www.whimbleparishcouncil.gov.uk

The Parish Council wishes everyone a Merry Christmas.

Amy Tregellas

Whimble Parish Clerk

Website: www.whimbleparishcouncil.org

Email: whimbleparishcouncil@gmail.com

We are also contactable on Facebook



WHIMPLE VICTORY HALL

Registered Charity 291496

Extension Plan Update



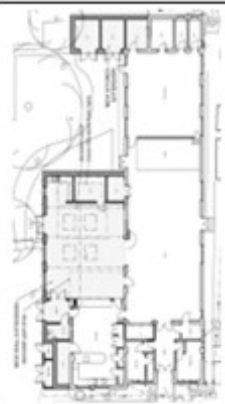
I am pleased to report that the Victory Hall Trustees have made significant progress on our ambitious extension project. The new extension will provide a versatile space available for hire year-round, enhancing our community's capacity to host events, meetings, and activities.

Over the past two years, our fundraising efforts have yielded excellent results. Thanks to the generosity and support of our community, we now have £180,000 in our Building Fund, nearly halfway to our goal of £400,000. This achievement is prominently displayed on the fundraising thermometer at the front of the hall, serving as a constant reminder of our collective effort and commitment. We are deeply grateful to the organisations and individuals who have contributed with generous donations and fund raising efforts.

With funds secured, we have taken the next crucial step by engaging an architect to draft the plans for the extension. These plans are currently being prepared for submission as part of our planning application. Securing planning permission will strengthen our position when applying for grant funding. The proposed extension will not only increase the hall's capacity but also provide modern, flexible spaces that can be adapted for various uses, ensuring that our hall remains a vibrant hub for all.

We extend our heartfelt thanks to everyone who has supported us thus far, particularly those who have joined the 250K Club. Your contributions, whether large or small, have made a significant impact. Together, we are building not just an extension, but a better community space for future generations to enjoy. Let us maintain the momentum and make our village hall the best it can be!

If you would like to contact us,
Email: victoryhall.friends@outlook.com
or call Sue Ayres on 01404823082



- blockages
- jetting
- CCTV surveys
- repairs
- lining
- drain tracing
- pitch fibre reforming
- pipe bursting
- septic tank/treatment plant installation
- soakaway problems
- water leak detection
- water leak repairs
- moling
- renewals
- Patio, Driveway & Decking cleaning

Tel: 01392 461670

Mobile: 07834 712345

www.drainwizard.co.uk



 gilbertstephens

Local legal & financial advice

Call our Exeter office on:

Legal Services **01392 42 42 42**

Financial Services **01392 34 64 64**

Or contact one of our other offices

Ottery St Mary 01404 81 22 28

Sidmouth 01395 51 24 43

Visit gilbertstephens.co.uk for more info

Gilbert Stephens is the trading name of Gilbert Stephens LLP which is authorised and regulated by the Solicitors Regulation Authority (no. 536070) and Gilbert Stephens Financial Services Ltd which is authorised and regulated by the Financial Conduct Authority (no 579899).



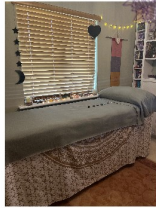
Reiki Healing

An alternative, holistic form of healing



Reiki may help you with

- Stress
- Anxiety
- Being overwhelmed
- Chakra balancing
- Pain management
- Spiritual connection
- Relaxation



1 hour session £50
30 minute session £30
Distance Reiki £30
Reiki training available



To book contact Kerry: 07791 171821
kerry@chi-quilibrium.com www.chi-quilibrium.com
40 Slewton Crescent, Whimble, EX5 2QA

Tarot Readings



Tarot Readings can give you a different perspective on life

Sometimes we feel a bit stuck, feel like we are at a crossroads, or are looking for guidance.

Whatever your question, I work with you, often creating a unique tarot spread to see what the cards reveal for you!

1 hour Tarot Reading £40
Rapid Read £15
Tarot Party (for up to 6 people) £120



Chi-quilibrium

Chi [chei] noun: the circulating life energy
Equilibrium [ek.wi'libr.i.əm] noun: a state of balance

- **Water pump**
 - supplies
 - repairs
 - installation
 - fault diagnostic
- **Private water supplies**
- **Filtration**
- **General domestic plumbing**

DPPS

07738 470274

*Friendly, professional
Whimble-based service*

chris@dpps.uk

www.dpps.uk

Devon Pump & Plumbing Services

A Window on Whimble's Weather - September/October 2024

After a relatively cool and unsettled summer, the weather in Whimble continued with a mix of warmth and rainfall throughout September and October, maintaining an autumnal feel but with notable events.

Slewton Crescent Weather Station: <https://bit.ly/35qwR9K>

Cobden Lane Weather Station: <https://bit.ly/3bt3FTf>

September – The month began with warmth and rain, highlighted by the hottest day on the 19th, when temperatures reached 24.2°C, well above the South West September average of 18–20°C (UK Met Office data). Despite the mild start, the coolest night fell to just 1.1°C on the 13th. Rainfall totals reached 161mm—more than twice the South West's September average of 75mm. This was largely contributed by a downpour on the 5th (35.1mm), which set a wet tone for the month. Sunshine levels were slightly below average, reaching just 89% of the typical amount.

October – Temperatures dropped with autumn's arrival, though the warmest day still reached 18.2°C on the 3rd, near the regional average maximum of 15–17°C. The coolest night fell to 1.9°C on the 11th. On the 8th, several intense showers resulted in flash flooding around Whimble, with the day's rainfall reaching 23.4mm, marking it as the wettest day of the month. This led to some roads becoming temporarily impassable. Later in the month, Storm Ashley intensified, exhibiting explosive cyclogenesis on the 20th, producing gusts up to 51.5 km/h and contributing to the month's total rainfall of 142.7mm—significantly above the October average of 92mm. Sunshine levels showed a slight recovery, reaching 91.9% of the monthly average.

In summary, both months recorded above-average rainfall and occasional storms, marking a varied and occasionally extreme early autumn for Whimble.

2024	September	Date	October	Date
Warmest Day	24.2 °C	19/09/2024	18.2 °C	03/10/2024
Coolest Night	1.1 °C	13/09/2024	1.9 °C	11/10/2024
Windiest 24hrs	37.0 km/h	29/09/2024	36.7 km/h	20/10/2024
Highest Gust	48.0 km/h	29/09/2024	51.5 km/h	20/10/2024
Wettest 24hrs	35.1 mm	05/09/2024	23.4 mm	08/10/2024
Av. Maximum	18.8 °C	N/A	16.3 °C	N/A
Av. Minimum	10.3 °C	N/A	8.4 °C	N/A
Total Rain	161.0 mm	N/A	142.7 mm	N/A
Total Sunshine	82.7 kWh/kW	89.0% of Av.	68.1 kWh/kW	91.9% of Av.

Phil Dominy & David Brewer.

Please send any comments/questions to dominypr@hotmail.com



CARPENTER, KITCHEN FITTER JOINER

INNOVATIVE.COMPETITIVE.REPUTABLE
EXCEPTIONAL STANDARD OF COMPLETION
FLEXIBLE TO ALL CLIENTS PRECISE NEEDS

HENRY TETLEY
0786865842

EMAIL: buildwithtetley@gmail.com

SCAN QR CODE TO ACCESS MY ONLINE
PORTFOLIO OF WORK



Could a Personal Assistant make life a little easier?



The affordable alternative to home care,
where you choose who supports you

Hub Personal Assistants can help with:

- Companionship
- Domestic tasks
- Meal preparation
- Personal care
- Shopping
- Respite
- Live-care
- Assistance to appointments



Call us today for a friendly no obligation chat.

01392 982 832
www.hubcaresupport.co.uk



PEK BUILD

BRICKWORK&MASONRY

New build-extend-refurbishment-renovate
alteration-barns-hard landscape-repairs
Your friendly, reliable local tradesman

No job too small.

Telephone Mark on

822913 or

07817097721

Email - mproberts@live.co.uk

3 The Signals
Talatton Road
Whimble
Exeter
EX5 2QL



City and Guilds
Qualified

Lamb Hill Garden Machinery

• Sales • Repairs



• Servicing

Andrew has over 20 years experience
in the garden machinery industry.
Previously at Otter Nurseries & more
recently at P.J.Flegg.

FOR ALL YOUR GARDEN MACHINERY NEEDS

CALL ANDREW TODAY

01404 823100/07773 579072

Moorview Industrial Estate Straightway
Head Whimble Devon. EX5 2QT

Email: lambhillgardenmachinery@hotmail.co.uk

Otter Care Services



Specialist and trusted provision of domiciliary care services to support an individual in their own home in Ottery St Mary and the surrounding area.

With over 20 years' nursing experience in the community and within the care sector, Christine provides that additional support with day-to-day household tasks, personal care or any other activity that allows an individual to maintain their quality of life and independent living.

Services include:

- Companionship
- Getting up & putting to bed
- Support with medication
- Escorting to appointments
- Overnight care
- Social outings
- Shopping
- Wellbeing Support
- Personal care
- Home help
- Meal time assistance
- Family Support

Contact Christine on:

Tel: 01404 813315. Mob: 07984 150696

Email: ottercareservices@hotmail.com

Grandison
of Ottery St Mary

**Finnimore Ind Est,
Ottery St Mary**

BRING THIS FLYER TO OUR
SHOWROOM AND ARRANGE
A FREE HOME ASSESSMENT

**You're invited to Devon's
largest fire, fireplace and
stove showrooms**

Dear neighbours,

I'd like to take this opportunity to wish everyone a wonderful Christmas, and a joyful and prosperous New Year. I hope you all find time to switch off, rest, and spend time with family and friends. My surgery will be happening as normal on December 16th, but I will not be checking emails over weeks beginning 23rd and 30th December. If you need to contact me over that time for any **genuinely urgent** matters, please use my mobile – otherwise I will pick up any issues raised by email in the new year.



By now, you are no doubt aware that the East Devon Local Plan process has allocated 83 homes in Whimple over the plan period to 2042. 33 of these on the Old Cricket Pitch, and 50 on part of the field behind Bramley Gardens. I've spoken to many of you about the reasons for this over the past few weeks and am happy to continue to do so but I wanted to make one thing absolutely clear: a policy allocation on these sites does **not** mean that the die is fully cast. For either site to be built on, a planning application would have to come forward from the landowners or developers that complies with policy around highways safety, ecology and tree protection and enhancement, flood risk and drainage, and a plethora of other issues – and at that stage there would be significant opportunity for us all to review and scrutinise those proposals and raise any issues that result. It is also entirely possible that neither site actually ends up coming forward – both have significant issues with flood risk, for example, that are not necessarily straightforward to resolve.

While it may yet be some time before any such planning application is forthcoming, if these sites do come forward while I am still your District Councillor I will be working hard, together with the Parish Council, to make sure that whatever comes forward is as sensitive and well-designed as possible, properly taking into account local issues and concerns – and if for whatever reason any application doesn't do that, I will be objecting and asking for that application to be amended or turned down.

In other – positive! – news from East Devon, work started on the replacement of various public toilets in Exmouth, Budleigh, Seaton, and Honiton a few weeks ago. The result of a review commissioned by the current administration, the Democratic Alliance – formed of Lib Dems, Greens, and Independents. This will see new, robust toilet blocks installed that are much easier and cheaper to clean. I know many folks in the village who visit our coast regularly have been keen to see this come forward, so I'm really pleased that this is now happening. I also understand that the project to replace the play park equipment at Slewtown Crescent, which went out to consultation in Summer of this year, will be carried out during 2025.

That's all for this edition. As always, if you'd like to discuss any of this with me, please do come along to my regular surgeries – ongoing at The Hive, opposite the Thirsty Farmer, where I'm available 4pm-7pm on the first Monday, and 8am-12pm on the third Monday, every month – no appointment needed.

Alternatively, contact me at todd.olive@eastdevon.gov.uk or on 07925 847933 and I'll be happy to arrange an alternative time.

Season's Greetings and a very Merry Christmas,

Clr Todd Olive

Ward Member for Whimble & Rockbeare
Portfolio Holder for Strategic Planning
East Devon District Council

The key to your future peace of mind

Marsh Barton
01392 277467

Units 1,2 & 6 The Space Place
Alphin Brook Road
Marsh Barton
Exeter EX2 8RG



Sidwell Street
01392 217328

131 Sidwell Street
Exeter
EX4 6RY

email: sales@guardiansecuritysw.co.uk
www.guardiansecuritysw.co.uk



Where's Bill?



Did you know Bill Jordan who lived at No.3 The Square? A lot of people come into the shop and ask why they have not seen him for some time, so I thought I would use Whimble News to provide everyone with an update.

Bill was sunning himself outside of his house on one of the warmer days earlier this year and got up to move, but immediately fell over injuring his arms. One of the local residents dressed his wounds but Bill found it extremely painful to walk and needed to be taken to hospital for a scan. He had cracked his hip bone requiring an operation and subsequent physiotherapy.

As he lived by himself and access to the bathroom and bedroom were via the stairs, he could not return home. He decided, after discussions with his daughter Sally, to move into a care home near Worcester where Sally lives and has since been there being looked after, fed and entertained.

Bill has decided to sell his house in The Square and it will shortly be on the market with Hall and Scott.

Bill is very well known around Whimble and has lived here for over 30 years, initially in Periton Farmhouse and latterly in The Square. He is well known mainly for his fitness helped by running around Whimble even into his 80's. He would participate in the annual Whimble fun run despite his age and there is a rumour that he abseiled down the Church tower one year. Bill was, in an earlier life a very keen cricketer, playing initially in South Africa where he spent his younger years and then in the Devon Minor Counties league and also for Whimble 2nd XI in the late 1990's.

I first met Bill when he needed to perform a bank transfer and thought this could be done via the Whimble Post Office, but we had limited operations which did not include money transfers. He was very derogatory of his bank and was reluctant to use their services, but we managed to sort it for him in the end. His low tolerance of large institutions and the way they treat their customers did not stop at his bank, particularly due to the way they are happy to abandon the non computer-literate population who have to resort to the unanswered help lines (HMRC being the worst!). Bill used to come into the shop regularly with his laptop to sort out some payment or query!

Bill was a Professor of Social Policy at the University of Plymouth and had authored 27 books, mainly on Social Policy using his experiences gained while working inside social services. His most contentious book was 'Paupers' written in 1973 which examined the drift towards an unequal and unjust society, detailed the emergence of the 'New Claiming Class' and how the poor are becoming locked into benefit dependency.

I am glad that he has settled near his daughter and his son and that he is being looked after, but we will miss him in the village.

Rory Maguire with thanks to Roger Smith.

You can read an interview with Bill in our October 2022 issue available on the Whimble News website.



Race Night is back for 2025.

The date for your diary is Saturday 29th March

It will be a great fun night at the Victory Hall.

Bar, pasty supper and lots of laughs. Hope to see you there.

Suzanne Rothwell 07836 634 848



Your Mortgage Specialists

Experts Since 2007

We can help you with...

Income
Protection

Residential
Mortgages



Buy-to-Let
Mortgages

Commercial
Finance

Life
Assurance

Development
Finance



Critical
Illness
Cover

Self-Build &
Custom Build
Mortgages



Bridging
Finance

Equity Release
& Lifetime
Mortgages



5* Reviews | Google & Facebook

☎ 01404 813050

✉ info@exemortgages.co.uk

🌐 www.exemortgages.co.uk

The Milking Parlour, Clapperentale Farm, EscotPark, Ottery St. Mary, Devon EX11 1LU

Your property may be repossessed if you do not keep up payments on a mortgage or loan secured against it. Exe Mortgages Ltd. is authorised and regulated by the Financial Conduct Authority (FCA). We are registered under the Consumer Credit Act & Data Protection Act and hold the appropriate licenses. Exe Mortgages is entered on the Financial Services Register under reference 705540.

Billy Bloomfield Whimple Handyman

Window Cleaning, Lawn Cutting, Strimming, Hedge Cutting, Garden Clearance, Shed Erecting, Fence Erecting, Erection of Wooden Lean To, Fence Staining, Patio Laying, Patio Cleaning, Decking Cleaning, Decking Assembly, Jet Wash Driveways and Paths, Painting (Inside & Out), Gutter Cleaning, Gutter Renewal, Facias and Roof Repairs (10 Years Roofing Experience)



Home: 01404 822345
Mobile: 07759 466671



DAN PLANK

Master
Thatcher

T: 01404 823081



M: 07881 942516

daniel.plank@yahoo.com
djpmasterthatcher.co.uk



The Devon Ceilidh Band for All Occasions

See our new website: slackmagirdle.net

Find us on Facebook

for more details or to contact us:

01404 823083 empal1@icloud.com

New look, same great band!



Friday 17th January 2025

Wassailing

This year's wassailing will start at the Heritage Centre at about 6.30pm for the usual 'rehearsal'. We'll then move off at 7.00pm towards the rear of the Heritage Centre where the first Wassail ceremony will be around the Society's Whimple Wonder tree.

The procession will then head up Church Road to Lower Woodhayes Orchard for the second wassail ceremony.

We'll then move back to the Square, via Dince Hill Close, where the procession will gather near the tethering stone to remember the Society's first Chairman, John Shepherd.

Onwards then along Town Lane and Broadclyst Road to the orchard adjacent to Knowle Cross Farm for the third and final ceremony of the evening, courtesy of Jim and Mary Chard.

The last port of call will be at the Cricket Club for traditional Wassail refreshments.

**A-wassail, a-wassail! The Moon she shines down;
Our apples are ripe and our nuts they are brown,
Whence thou mayest bud, dear old apple tree,
And whence thou mayest bear, we sing unto thee.**

Chorus.....

**With our wassail, wassail, wassail!
And joy come to our jolly wassail!**

**O apple tree prosper, bud, bloom and bear,
So we may have plenty of cider next year.
And where there's a barrel, we hope there'll be ten,
That we may have cider when we come again.**

Chorus.....





Christmas Eve Carols In The Square 7.00 pm



(In the church, if the weather is bad)

Musicians always wanted, let me know if
you'd like music in advance:

empalmusic@gmail.com

Mulled wine & hot chocolate available from
Whimble Stores from 6.30pm, £2 each, £1 of
which will go to the charity.

Collection in aid of

Devon Freewheelers -
Blood Bike Service



Please bring cash for the collection buckets, donate by card in
Whimble Stores or use the QR code



JOIN US FOR THE MAGIC OF
Cotley Christmas

23RD NOVEMBER - 24TH DECEMBER

- * CHRISTMAS TREES * REAL REINDEER * NATIVITY BARN *
- * FESTIVE FARM SHOP * TAKEAWAY REFRESHMENTS *

TICKETS FROM £6.50 PER CAR.
TICKETS REFUNDED IF YOU BUY
A CHRISTMAS TREE

*Scan this code to
book your ticket*



WWW.COTLEYCHRISTMAS.CO.UK



CHRISTMAS TREES



FAMILY FUN



REINDEER

COTLEY FARM,
WHIMPLE, EXETER,
EX5 2QR



@COTLEYCHRISTMAS



WHIMPLE CHURCH

<http://churches4all.org/>

Hello my friends,

I may be typing this in November but as you read it, in the words of Noddy Holder from Slade, 'Its Christmassssssssssss!

And as Andy Williams sang, "the most wonderful time of the year"; an opportunity to have a rest from the daily routine, spend precious time with family and friends, give and receive gifts and maybe, just maybe, partake of a small glass of sherry or two. It's a period most of us really look forward to.

But it is not like that for everyone. On these long and cold nights, it is not surprising that we seek bright lights of Christmas to ward off the winter. But for those who are lonely Christmas can be an even harder time of year.

This is where the Christian message of Christmas becomes so relevant because Christmas doesn't just mark a Godless celebration of eating, drinking and merriment; it has at its roots the commemoration of the birth of Jesus, God becoming one of us, living amongst us and dying for us. It is that wonderful, inspiring message of hope and light that can dispel even the darkest of misery and suffering and be the gift, that really does keep on giving.

Christmas answers three great needs which all of us have: to be loved, to have a purpose, and to belong. It provides a relationship with a loving God, a purpose in life in following His teachings, and belonging to a family of Christian believers in a local community and worldwide.

Over recent decades the Church of England has seen a slow and steady decline in numbers in their congregations, and this was accelerated by Covid. At the same time, we see a rise in loneliness, isolation, and mental illness, with individuals feeling that they live purposeless lives. These two trends cannot be unconnected.

Human beings are social animals; we require to have regular contact with others. The church has always provided a welcoming environment, with an exercise in collective worship that brings people together and a programme of social outreach which helps glue communities. Our weekly coffee mornings are an example of that. These things are not just an offshoot of what we believe, they are a foundation of it. Journeying together along life's bumpy road.

There is, across our society, a hunger for meaning and truth in life, people really are looking for a purpose. For those who have turned their backs on Christianity, the void is often filled by other belief systems – not just militant atheism, but other causes such as environmentalism or nationalism. As the writer GK Chesterton put it, "when men choose not to believe in God, they do not then thereafter believe in

nothing, they then become capable of believing in anything". None of these alternative ideologies can bring the love, purpose and sense of eternal belonging that faith can, because, what Christianity offers literally required a miracle.

There will be folk reading this who, like Richard Dawkins, will dismiss it all as outdated nonsense. Yet there are many millions of people finding direction, love and purpose in the message of Jesus Christ, so however you spend your Christmas, my prayer for you is that you will hear a message of love, purpose and belonging.

God bless. **Rev Marc.**



WHIMBLE
Pre-School

Quiz & Curry

Join us for a fun night of quizzing,
delicious curry and help us raise
money for Whimble Preschool.

Saturday Feb. 1 at 6:15pm
Whimble Victory Hall

Tickets on sale soon

Longfield Cattery

heated single and double chalets
personal care and attention



(now also looking after small animals)

01404 822275

stephen@longfieldcattery.co.uk

www.longfieldcattery.co.uk

Longfield ~ Church Road ~ Whimple ~ Exeter ~ EX5 2TF

AERIAL SERVICES

(Mike Cummings)

- Same Day Service Available
- 7 Days A Week
- Sales, Service, Installation
- Repairs & Reception Problems
- Digital Aerial Upgrades



• NO CALL OUT CHARGE
• FREE ESTIMATES

01392 279513 07836 641635

www.aerial-services-mikecummings.co.uk

Devon's countryside is under threat

Now more than ever



You can help protect it.
Join us today.

DEVON CP
RE

The Voice for Devon's Countryside

01392 966737
devoncpre.org.uk

A charitable incorporated organisation with registered charity number 1175228
A member of the National CPRE network

WE KNOW WHO WANTS
TO LIVE IN YOUR PROPERTY



ASK FOR A FREE VALUATION

FOR FRIENDLY AND PROFESSIONAL
ADVICE CALL US ON 01404 814306

www.redfernsproperty.co.uk



The Zoopla logo is a solid purple rectangular box with rounded corners. The word "Zoopla" is written in a white, bold, sans-serif font, followed by ".co.uk" in a smaller white font.

Lee Maddicks

David Drew

Whimble Garden Safari

June 21st and 22nd 2025

We aim to create a family friendly weekend exploring the hidden gems of Whimble

**Every garden is welcome to join.
small, wild, manicured, rustic.
No garden too small.**

**Put the date
in your diary.
more information
to follow soon**



**Would you be interested in opening your garden?
If so contact: BARRY GOODMAN**

ocbarn@gmail.com

07866724242

ALL PROCEEDS GO TO THE VICTORY HALL EXTENSION FUND



**PLANET SAL FOR
GIFTS AND CARDS
WHICH ARE A BIT 'UNUSUAL'
(Like the owner..)**

3, BLACK LION COURT,
HONITON EX14 1ES
01404 45777



OPEN MON 11 - 3
TUES-SAT 10 - 4.30
www.planetsal.co.uk
info@planetsal.co.uk

Covering Exeter and
surrounding areas.



☎ 07496 961 255

f D E Window Cleaning Services

"FREE GUTTER CLEAR"

IF YOU SIGN UP TO A REGULAR WINDOW CLEAN

LIMITED TIME ONLY DEAL

**CALL US TODAY
07496 861 255**

PROFESSIONAL, RELIABLE & FULLY INSURED



Terms & Condition Apply:
Free gutter clean on your 7th window clean

If you are not 100% satisfied with any of our services,
simply notify us within 24 hours and we will return & re-do
any unsatisfactory work- It's our promise to you!



R J Spellman

Renovation & Property Maintenance

.....
Carpentry & Joinery
Kitchen Fitting & Remodelling
Wardrobes & Fitted Furniture
Window & Door Fitting
Plastering & Painting

Fully Insured

.....
For a free quotation or advice please get in touch
e: rjspellmanrenovation@gmail.com
w: rjspellmanrenovation.co.uk
t: 07511 533 765

Seasoned Logs

Full load £220
Loose tipped approx. 2.5m³

Half load £120
Loose tipped approx. 1.25m³

Bulk Bag £70
approx. 0.625m³



Martin Newbery
07967 219559

martinjohnnewbery@hotmail.com

Newberyfirewood.co.uk



WHIMPLE TENNIS CLUB

Your own private court near the centre of the village

- Low-cost membership
- Members only
- A well-maintained tarmacadam court
- Regular social sessions
- On court booking system
- Coaching available

Contact Viv Brown on 07876653264 or email whimpletennis@gmail.com for more details



Gentle Candlelight Yoga



**REVIVE
YOGA**

booking essential



Tuesday 17th Dec
WHIMPLE
VICTORY HALL
6.30-8pm

reviveguernsey@gmail.com

A Merry

Christmas and New Year

(As best we know. If in doubt contact



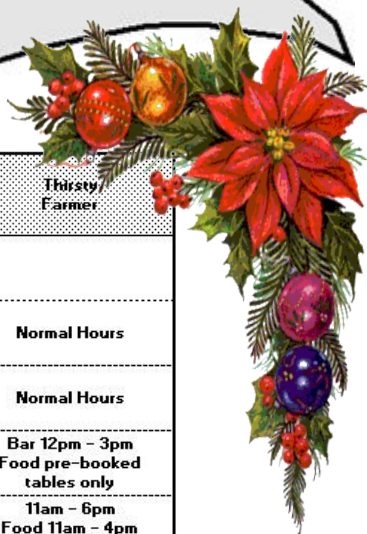
		St Mary's Church Services	Whumple Stores	Milestone Gar
Sunday	December 22nd 2024	6.30pm Carols by Candlelight		
Monday	December 23rd 2024		8am to 6pm	Normal Hours
Tuesday	December 24th 2024	Midnight Mass starting at 11pm	8am to end of Carols	Normal Hours
Wednesday	December 25th 2024	Family Service and Holy Communion - at 11am	Closed	Closed
Thursday	December 26th 2024		8am to 12pm	Normal Hours
Friday	December 27th 2024		8am to 6pm	Normal Hours
Saturday	December 28th 2024		9am to 12pm	Normal Hours
Sunday	December 29th 2024		9am to 12pm	Normal Hours
Monday	December 30th 2024		8am to 6pm	Normal Hours
Tuesday	December 31st 2024		8am to 6pm	Normal Hours
Wednesday	January 1st 2025		8am to 12pm	Closed
Thursday	January 2nd 2025		Normal Hours	Normal Hours

From the Whin

Christmas

Year Opening Hours

(the organisation for confirmation)



Age	Ottery and Whimble Surgeries	The Jack in the Green	New Fountain Inn	Thirsty Farmer
s	Open usual hours 8am to 6.30pm	Normal	Normal Hours - Drinks Only	Normal Hours
s	Open usual hours 8am to 6.30pm	Open all day Food 12pm - 4.30pm and 5.30pm - 8pm	Normal Hours including Curry Evening	Normal Hours
	Closed	Closed until 10th Jan	11 to 1.30pm for Drinks and then 2pm to 6pm <u>pre-booked meals only</u>	Bar 12pm - 3pm Food pre-booked tables only
s	Closed	Closed until 10th Jan	12pm to 8pm Drinks Only	11am - 6pm Food 11am - 4pm (Brunch menu)
s	Open usual hours 8am to 6.30pm	Closed until 10th Jan	Closed	Normal Hours
s	Closed	Closed until 10th Jan	Closed	Normal Hours. BAND NIGHT
s	Closed	Closed until 10th Jan	11am to 10pm Food 12pm to 6pm	Normal Hours
s	Open usual hours 8am to 6.30pm	Closed until 10th Jan	11am to 11pm Drinks Only	Normal Hours
s	Open usual hours 8am to 6.30pm	Closed until 10th Jan	11am to 1.30am Drinks Only	12 noon - 1.30am
	Closed	Closed until 10th Jan	Closed	11 - 6. Food 11 - 4 (Brunch menu)
s	Open usual hours 8am to 6.30pm	Closed until 10th Jan	Normal hours resume	Normal Hours

Sample News Team



THE THIRSTY FARMER

UNDER NEW MANAGEMENT!

- Recently refurbished
- Dog friendly
- Live music last Friday of the month
- Tasty new menu
- Family friendly

OPENING HOURS

MON – SAT

Open: 12:00 – 23:00

Lunch served: 12:00 – 14.30

Dinner served: 17:00-21:00

SUN

Open: 12:00 – 22.30

Food served: 12:00 – 20:00



Keep up to date



@thethirstyfarmerwhimple



01392 305146

The Thirsty Farmer, Whimple, EX5 2QQ



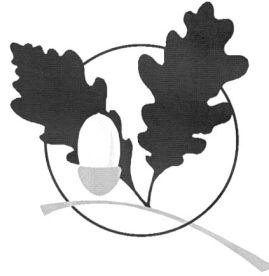
**GEOFF
DELVES
ROOFING**

**YOUR FRIENDLY, LOCAL ROOFER,
WITH OVER 30 YEARS IN THE TRADE
PLEASE CALL ME IF YOU WOULD LIKE
A QUOTE FOR ANYTHING FROM
REPAIRS, FLAT ROOFING AND
TILE REPLACEMENTS, TO A FULL ROOF
INSTALLATION OR SLATE WALL
CLADDING.**

**07939 879305
(WHIMPLE)**

Oak Building Services

Quality works at competitive rates



renovations
extensions
patios & fencing
decoration
bathrooms
kitchens
roofing
carpentry
maintenance

References for all past projects available

Contact Trevor Oakaby
at Brickyard Cottage, Whimple EX5 2PP
on 01404 822655 evenings & weekends

The Devil's Prefects at The Thirsty Farmer

Avalon

PLANNING & HERITAGE

Avalon provides advice on an array of planning and historic building issues, adding value to larger or more complex projects, providing a bespoke service to suit any requirement.

Whether you intend to construct a new building(s), expand your current site, adapt an existing structure or evaluate an investment opportunity, it makes sense to consult a professional who shares your aspirations.

11-15 Dix's Field, Exeter
01392 581150 (also in Whimple 823617)
07979 518976

murray@avalonplanning.co.uk

www.avalonplanning.co.uk

In the words of that great culinary oracle, Sir Terry Wogan, "it's time to get the brussels on". We've done Hallowe'en and Bonfire Night and so we are set fair for Christmas.

Speaking of which, our members' Christmas party is on 10th December from 12noon. Last year we made a Christmas table decoration, enjoyed a bring and share lunch, endured the Marmite quiz and drew our fabulous Christmas raffle. All in one afternoon! This year will be along the same lines.

King's School Christmas fair has not fared so well. It's been cancelled as a suitable date could not be found which did not clash with other events to be held by the school or within Ottery itself. Ah well, there's always next year.

Our entry into the WI County skittles competition took an unexpected twist. The team we played on 8th November could only field five of the required six players. They are a very small institute, Whimble magnanimously suggested that each of their players had an extra go. Little did we know at that stage that several of them were blooming good and so we lost by 12 points! Hilarious. Some of us (me really) were relieved to be eliminated. Our opponents then declared they would withdraw from the competition and so we were declared winners by default. Round two beckons. Oh joy.

Earlier in the year we asked members for their support by knitting poppies which would be used to form a Whimble WI wreath for this year's Remembrance service. We were heartened by the response and Sarah having sourced the base for the wreath and covered it in hessian then spent a productive morning with Marilyn, assembling and arranging the poppies on the wreath. Grateful thanks to all those ladies who made our respectful offering possible and a delight to behold.

As we look forward to the new year, our programme for 2025 is finalised and eagerly anticipated. Just our November meeting left where, would you believe it, our booked speaker has let us down (yet again). One speaker cancellation in a year is a disappointment, two cancellations are frustrating but THREE is not a problem! We're very good at last minute improvisation now.

Our replacement 12th November speaker spoke about training medical detection dogs (super sniffer dogs) to detect the odour of human diseases and also dogs to be partnered with individuals who have no awareness of an impending life threatening event. It was a really interesting talk. Every dog has 300 million receptors in their nose compared to a human's measly 10 million and each disease has a different odour. Such valuable work carried out by such a small charity.

Finally, on a lighter note, If any ladies would like to know more about Whimble WI, the amazing speakers, enjoyable outings, scrumptious lunches, endless opportunities and wonderful company therein, then please contact Marilyn on 821860 for more information.

With warmest wishes for the forthcoming festive season and genuine hope for a peaceful new year.....

DI Eden



Whimble Community Choir Is Born!

On Wednesday 25th September 43 members of our community nervously stepped into St Mary's Church for the launch of Whimble Community Choir. There was an air of expectation, excitement and terror!

By the end of the evening at 8:30pm - there was laughter, fellowship and a real sense of achievement, having learnt five songs, some of which we were singing in three part harmony! What joy that was.

The choir is going from strength to strength - there is a real sense of community and fun every Wednesday evening, as we challenge ourselves with learning new songs and enjoy singing old favourites.

Sessions will end for this term on Wednesday 27th November but will resume on Wednesday 8th January 2025 for four sessions.

Everyone is invited along on Wednesday 29th January at 7:30pm for a 'Show and Tell' event. Come and see what we have been up to and experience the very special bond this group is forming.

And finally in the words of our members:

"Uplifting evening"

"It's such a joy to sing with you all"

"If you want an uplifting evening, this is the place to be"

"I was made to feel very welcome"

Julia Green, Director - Whimble Community Choir



**WHIMBLE & BROADCLYST
YOUNG FARMERS**

CHRISTMAS TREE COLLECTION

4th JANUARY 2025 £10 per tree

COLLECTION AVAILABLE FROM: Whimble, Broadclyst, Clyst Hydon,
Talatton, Clyst St Lawrence, Hele, Bradninch, Poltimore, West Hill,
Ottery St Mary, Woodbury, Exmouth, Budleigh and areas of Exeter

Please text Jack on 07724 390839 or
Olivia on 07747 178054 to book your trees in!

The entire text block is framed by a decorative border. At the top and bottom, there are green pine branches with white snowflakes. On the left and right sides, there are red and white bows with gold ribbons. The background of the text area is white.

WARTS

DATES FOR 2025:

13th January, 24th March
14th July, 13th October

We would kindly remind you:
ALL ORDERS FOR OIL SHOULD BE PLACED AT LEAST
ONE WEEK BEFORE THE ABOVE ORDER DATES!



(Minimum order: 500 litres. Please allow a further 10 days for delivery)
All existing (and potential new) members with access to e-mail may contact
Graham Batten with their order/*registration at grahambatten0@gmail.com.
If you are without email you may call 01404 823317
*Registration to include: Name/Address/Postcode & Telephone Number

Ley's Aerials



Tel: 01404 821611

Mobile: 07866 464411

E-mail: leysaerials@gmail.com

Chris Ley
Nuttaberry, Church Road

Whimple
EX5 2TA

- Aerial & Satellite Dish Installations & Repairs
- Freeview & Freesat Reception Solutions



Book Online at: www.leysaerials.com



**Musical Director
Emma Palmer**



Christmas
Concerts



**Payhembury Church,
with Payhembury School Choir
Sunday 8th Dec, 3pm**

**Church of St James the Great, Talaton
Friday 20th Dec, 7pm**

Refreshments Retiring collections



WHIMPLE HERITAGE CENTRE



Although the Whimple Heritage Centre is closed during the autumn and winter months, we have a packed schedule of events to keep us busy. The next is our members and friends Christmas lunch on 7th December 2024 from 12noon until 4pm at the Cricket Club – always an enjoyable occasion.

People often complain that once Christmas is over, the next couple of months can be a bit flat. Well, not in Whimple, where we have the Whimple Wassail to look forward to on 17th January each year. If you are travelling to Whimple from outside the village, please note that there is almost no public parking in the

village, and the roads leading to the village are not suitable for pedestrians being narrow, unlit, and bounded by high hedges. We strongly recommend that you consider travelling into the village by train. The New Fountain car park will be closed for two hours for the wassail. The ground in the orchards can be uneven and muddy, so suitable footwear is a must; high visibility clothing and a torch are also advisable. Bring something to bang to make a noise and join in the fun! Please see our full-page advert for the wassail night itinerary.

Our next talk is *Times of Change: A Brief History of British New Towns* by Whimple resident, Alan Lascelles, which takes place at 7.30pm on Friday 31st January 2025 at the Victory Hall. Many of you will be familiar with Alan's tireless work on local planning issues through his articles in the Whimple News. He has a professional background in town and country planning, with new towns being a particular interest – he tells us that he has visited most new towns in the country, some more than once! With our very own East Devon new town, Cranbrook, taking shape on our doorstep, this subject is of relevance to us all.

Alan's talk will examine why and where new towns have been built, and the key figures involved in their development. Although spanning the last two thousand years, the talk will focus particularly on the 19th and 20th centuries, looking especially at the insanitary conditions in Victorian industrial areas which prompted the establishment of new towns, and the impact of the Second World War. It promises to be an enlightening evening, so do join us. Non-members are very welcome for a small charge of £3 – entry is free for members.

In other news, we are very pleased to welcome Jenny Fells onto the Whimple History Society committee. Jenny has kindly agreed to take on the role of secretary vacated earlier this year by Roger Smith.

And finally, a reminder to our members that subscriptions become due on 1st January 2025 at the rate of £12 for a single person or £20 for a couple. Members receive a regular newsletter and get free entry to all our talks. If you are not already a member then please consider joining to support our work.

Tina Kelly, Curator

www.whimple.org

info@whimple.org

Tel: 01404 822499



EVERGLOW

Chimney Sweeps

Whimble based and your LOCAL sweep
NO MESS, NO FUSS
APICS Member, Fully Insured

Tel: 07522 619308

Email: everglowchimneys@gmail.com



**SFA APPROVED
CHIMNEY SWEEP**

BARRY SEAFORTH DECORATING SERVICES

Est 1979



PAINTING WALLPAPERING

SPECIALIST FINISHES MURALS TILING

COVING CARPENTRY ALTERATIONS

REFERENCES AVAILABLE

Call Barry on 01297 22434

or 07712 120635

or email: bar-



Hilary Ceremonies

01404822581

hilarynowill@btinternet.com

www.hilaryceremonies.com


Life celebrated with joy, creativity, passion and compassion
Funerals, wedding ceremonies and naming days


the mindful gardener

*What business do I have
in the woods if I am thinking of
something out of the woods?*


Thoreau

 Mindful maintenance of the garden you have created

 Mindful planting schemes: transforming your desire into a design that works for its purpose

 Mindful of your current wishes for your garden

 Mindful of the environment

 Mindful attention to special plants

 Mindful of biodiversity

....giving you peace of mind

For more information contact Elaine Nicholas 07917386254 elaine@danublu.org.uk

LOVELY VENUE
with
PARKING
&
UNDERFLOOR
HEATING

YOGA

WITH SARAH



TUES 6.30 - 7.40pm (evening unwind)

THURS 9.30 & 10.45am (morning flow)

at

**THE HUB, WILLOW VIEW PARK,
STRAIGHTWAY HEAD, WHIMPLE**

Suitable for all levels

£9/class or 6@£48

Contact reviveguernsey@gmail.com

07591 599162



Rochelles' Curtains, Blinds and Foam

Phil-kendall@hotmail.co.uk

07525 618286 (Phil)

We come to you
for measuring, quoting and fitting

Made to measure Curtains and Blinds

Wide selection of fabrics

Tracks and poles

Fitting service

Free measuring service

In-house making service

We also make with your own fabric

We make covers for foam cushions

FOAM cut to size for upholstery/caravans/boats etc.

Revive old furniture

Upholstery foam/Closed cell foam/Memory foam toppers

Polystyrene bead for bean bags

Gas & Oil boiler repairs
Safety certificates
Servicing
Installations



FlameFix™

A local company providing
a personal service

Call Jules

07883 037667

Visit us at www.flamefix.co.uk
and read why customers say
we're highly recommended

Oftec registered
Gas safe registered



FIRE SECURITY

UK LIMITED

Fire detection and alarm systems

**INSTALLATION, COMMISSIONING
& SERVICING**

Maintaining all types of fire alarm systems

- Domestic, commercial & industrial
- 18 years of experience
- Emergency repairs and fault finding
- Fire certificates
- Design and supply complete systems
- Schools, lets, small/large properties

Contact Chris for a free quote

07875 841288

info@firesecurityuk.co.uk
www.firesecurityuk.co.uk



Front Row Club
WHIMPLE

Saturday 14th December

Saturday 11th January

Saturday 8th February



Monthly film nights at the Victory Hall

Doors open 7pm for 7.30pm

BYO drinks and glasses

**All welcome. Non-members £5 on the door or pay £20 for
the whole season**

Winter Film and Coffee Morning

The Victory Hall will be opening its doors to the community on the morning of Thursday 19th December for a film and coffee morning.

Taking advantage of a school non-pupil day, this event will be completely free to attend. Donations will however be gratefully accepted for the refreshments, and we will be selling tickets for a prize draw to win a Christmas hamper. All proceeds will be donated to the hall's extension fund.

Doors will open from 10am for tea, coffee, cakes and savoury bakes. The film will start at 11am. We can't publish the name of the film here (instead you'll need look at the posters outside or inside the hall) but we can say that this is a recent release and can give you some clues:



Nobody likes teacher Paul Hunham – not his students, not his fellow faculty, not the headmaster, who all find his pomposity and rigidity exasperating. With no family and nowhere to go over Christmas in 1970, Paul remains at school to supervise students unable to journey home. After a few days, only one student holdover remains – a troublemaking 18-year-old named Angus, a good student whose bad behaviour always threatens to get him expelled.

“Hilarious and Heartfelt.”

★★★★★ Daily Telegraph

“A Triumph.”

★★★★★ *Empire*



This promises to be a fun event which we hope will be well supported. To help with the planning for refreshments we'd be very grateful if those intending to come could let us know either via the signup sheet inside the hall foyer or via 01392 982 658 (leave a message) or via email to frontrowclub@gmail.com

We look forward to seeing you there!

Rob Davis (Front Row Club / Vice Chair, Whimble Victory Hall)



**A film with friends
in the run up to Christmas**
FREE ENTRY

**The Front Row Club and the village hall
will be hosting a community film and buffet**

EVERYONE IS WELCOME.

Whimble Victory Hall

Thursday 19th December 10-2

Tea, coffee and cake when doors open at 10.

The film will start at 11

**Savoury bites in the interval
and at the end of the film.**

DONATIONS WELCOMED

Prize Draw too!

Film 'The Holdovers' suitable for 12+

Looking after your trees and
gardens for over 25 years

Sid Valley Tree Surgery & Landscapes

TREE SURGERY
HEDGE CUTTING
STUMP GRINDING
GARDEN CLEARANCE
FULL LANDSCAPE SERVICE
FREE QUOTATIONS



Tel: **01395 519856**

Mobile: **07880 797613**

www.sidvalleytreesurgery.co.uk



James Brewer Quality Made Joinery

Ellicombe House
Cutteridge Lane
Whitestone, Exeter EX4 2HE
Tel: 07896 530640
Fax: 01392 811604



Email: jbrewer2410@hotmail.co.uk

(not VAT registered)

*Please contact me for all
your carpentry and joinery
needs, i.e. doors, windows
and furniture, I will be
pleased to give you a
quotation.*

darren peek plastering contractor

plastering and rendering,
dry-lining, coving,
cob and lime specialist,
floor-screeds,

mobile 07786514172

tel 01404 41211

darrenpeek2@aol.com



Protect our Whimble & Rockbeare Group

December 2024

To challenge, to protect and to inform

Henry Ford, the founder of the Ford Motor Company, famously stated in 1916 that “*History is bunk*”. This, to the casual observer, implied history is all rubbish, not worth the time or bother to study. As in many examples, especially in History, Geography and Archaeology, you need to dig below the surface to find out what was going on. What Henry Ford was ‘on about’, as he opened Greenfield Village, an ‘outdoor history museum’ in Dearborn, Michigan, was that history was written by the establishment, and usually about politicians and military heroes. In the UK you could add Kings and Queens (especially Tudor). Ford wanted history to celebrate inventors and farmers, the creators of wealth and work, plus those who fed and clothed the nation. Clearly, there has been a considerable shift in the study and teaching of history over the last few decades.

Whimble’s place in history is very much with the farmers and the entrepreneurs that invested in the future. They laid out orchards and built a factory and its infrastructure to create Whiteway’s Devon Cyder. This cyder was exported around the world, and also helped to slake the thirst of Whimble farmers.

Today, our farmers carry on feeding the nation but in addition have evolved into the custodians of the natural environment and the visual impact of the landscape. You only have to see the neatly trimmed hedgerows as you drive down Church Road.

This farmland, this open countryside, this green belt that separates Cranbrook from the core village of Whimble is vital to protect. It’s there to do what it ‘says on the tin’, “protect our Whimble and Rockbeare.” The Parish lost approximately 37 hectares by ceding land to Cranbrook in 2016. It was accepted that it was ceded on the condition that Cranbrook would not be developed east of Cobden Lane. This has been ignored by Cranbrook Consortium, EDDC and the Government Inspector.

In August 2022, the Planning Inspector issued her report on the examination of the Cranbrook Extension Plan. The Inspector concluded that subject to Main Modifications, the Plan is sound and can be taken forward by East Devon District Council for formal adoption.

After some considerable time re-jigging the plan, East Devon District Council (EDDC) granted planning permission for the first expansion of Cranbrook in April 2024. It is the largest planning permission since permission for the new town was issued more than 13 years ago. The expansion at Cobden allows up to 1435 additional homes and 10 permanent pitches for gypsies and travellers to be created. Critically, it includes approximately 500 houses north of Cobden Farm.

The next issue is the Local Plan, which covers the entire district. At the Strategic Planning Committee (SPC), held on Tuesday 1st October 2024, district councillors agreed with the recommendations of planning officers and rejected all the suggested sites.

However, Site No 11, Land at Station Road (the Old Cricket Ground) was approved. At the meeting a statement was read out on behalf of Whimble Parish Council indicating that the Parish Council consider none of the sites being suitable for development, but thought that a site on Church Road should be reconsidered. Our local district councillor Todd Olive spoke from the floor. He outlined local responses to the consultation and commented that on balance, the local community felt the site was sustainable.

In the emerging Whimble Neighbourhood Plan, as at the 19th February 2024, the following is evidenced:

Section 7.5 Green Spaces, included Richard Whiteway Memorial Land east of Slewton Crescent - an area which should be accessible to the public and where possible, be enhanced with trees and plants to improve the landscape.

Section 10.4 Potential use of the 'Old Cricket Ground' for a village park.

In **Appendix V** Consultation April 2022 and **Appendix VI** derived from Post-IT notes from the public gathering at the Victory Hall in Feb 2022, both indicated additional comment in support of protecting the site.

Appendix II provides a clearer view of village opposition:

EDDC - Local Plan Common Place Feedback. Consultation period – 7th November 2022 until 15th January 2023. (Spread sheet data)

Whim 11 - Station Road (Old Cricket Ground) - Extracted from EDDC Speed sheet

Dissatisfied	Unhappy	Neutral	Happy	Satisfied	Total Responses
15	49	8	2	6	80

Todd Olive did not voice either support or objection to the site being included for allocation, but preferred another site in the village. At the Strategic Council meeting no specific reference was made to the Whimble Neighbourhood Plan.

However, in the Final Site Allocations undertaken by the SPC held on the 1st November, Site 8 - land west of Church Road and Bramley Gardens was discussed. Simon Coles, speaking for the development, provided inaccurate information to the committee which does not contribute to effective decision making. He was promoting that part of the land could be used for housing purposes. Cllr. Geoff Yung (Woodbury & Lymstone) and Cllr. Jessica Bailey (West Hill) pushed hard in favour of using the north east part of site 8. It was outlined that this part should be added to the boundary of the 'built-up area' of Whimble. The proposal was made by Cllr. Todd Olive for this part of the Site to be used for development of approximately 50 houses, however this was vague in respect of the boundary, and precise housing numbers were not being defined. The proposal was seconded by Cllr. Yung and it was agreed by the Strategic Planning Committee Members.

Feelings of the villagers were very much against this green wedge site being developed and it was almost unanimously opposed:

Whim_08 - Land west of Church Road and Bramley Gardens

Dissatisfied	Unhappy	Neutral	Happy	Satisfied	Total Responses
9	77	0	0	1	87

It is a tragedy that councillors are making major decisions without fully appreciating the evidence that has been gathered by the citizens of Whimble concerning what development is acceptable and what is not. Localism matters, but this has been steamrollered by the inadequately informed. POW+R takes the view that it might have helped if the Whimble Neighbourhood plan had gone beyond the draft version, so that a greater level of protection could be afforded. Whilst POW+R is fully aware that a Local Plan will always take precedence over a Neighbourhood Plan, the local authority must still take the views of the parish into consideration when making planning decisions. It would therefore make good sense for the Neighbourhood Plan to state the wishes of its residents and make it clear where development can reasonably be carried out and in what form. It is regrettable that the NP is not yet past its draft form and that the Parish Council no longer required POW+R’s assistance and expertise in pushing this important document forwards.

It is also worth noting that the Government is updating the National Planning Policy Framework, so, there may be factors that affect the emerging Local Plan. The final draft of the revised Local Plan will be made available for formal objections and other responses early next year. POW+R Group will be ready to critically analyse what is set out for Whimble and then take appropriate action.

POW+R Group will continue to challenge, to protect and to inform, as ‘We love Whimble’.

Alan Lascelles MA

Dated: 30th November 2024

POW+R Group – Press and Publicity Officer

**Hedgelaying Volunteer Day
Saturday 25th January
10am to 4pm**

Learn the traditional craft of hedgelaying with an East Devon District Council Countryside Team Ranger at Whimble Primary School Orchard.

All tools provided - for more information and to sign up please email: pollyluscombe@gmail.com





Your Personal Assistants

A niche group of personal assistants set up to provide top quality care and support.

Mobile: Poppy - 07786392480

Email: saskialayburn@poppycare.org



Care, Compassion and Commitment

Dedicated farm and companion animal vets and nurses,
caring for your livestock and pets
24 hours a day



Cullompton
01884 35558
Tiverton
01884 258585
Honiton
01404 44095
Uffculme
01884 841317



www.valeveterinarygroup.co.uk



Our penultimate event for the year on Friday 20th September was a talk by Mick Street who was a former Chairman of the Club. His talk was about "The Ten Plants I Could Not Do Without". It was a very entertaining talk and fascinating to hear what plants he favoured especially when there are so many to choose from!

Our annual Quiz was held on Friday 9th November where the little grey cells were put to the test with another batch of challenging gardening and general knowledge questions! This year we had a record attendance and once again it was a very enjoyable evening. Our thanks to Brian and Sherril for putting all the questions together and to Colin for operating the technology.

Our first meeting of the new year will once again be our Annual General Meeting which will be on 27th January 2025 in the main hall of the Victory Hall commencing at 7.00pm. In order to make the most of the evening, following the AGM, we hope to have another illustrated talk. All members and anyone else interested to see the presentation will be very welcome to attend! We would be very pleased to welcome anyone who would like to join our Committee as we really do need some new people with fresh ideas to help promote the Club.

Early in the new year we will be looking at the classes for the 2025 Flower Show and hopefully we will have a schedule out by the time we run our annual plant sale in May. Following our appeal for help, we have a number of ideas from various people for the classes so that has been a great help. So, for those of you who enjoyed the experience of exhibiting this year, the date for next year's show is Saturday 9th August 2025!

Paul Wilson, Chairman, Whimble & District Gardening Club

Foot care practitioner and private carer

I am a qualified, experienced
home based carer.

Foot care including nails,
massage, and minor problems

All jobs from housework,
and companionship
to full personal care

Experienced in
dementia care

Please call **LUCY** for details

07974 114412



PF&A

PREMIER FENCING & ASTRO

**QUALITY FENCING & ARTIFICIAL GRASS
AT PRICES YOU CAN AFFORD**

EXETER • 01392 341 315

EAST DEVON • 01395 205 563

info@premierfencingandastro.co.uk

www.premierfencingandastro.co.uk

FENCING ■ DECKING ■ GATES
ARTIFICIAL GRASS ■ LANDSCAPING



Trusted Tech

Reliable IT Support Services

Slow computer?

Unreliable internet connection?

Looking for friendly, one-to-one computer tuition?

Trusted Tech can help!

Contact us today!

07989 708629

william.grimsley@trusted-tech.co.uk

www.trusted-tech.co.uk



S.W Podmore

Podmore building
services

25+ years experience

Local and reliable

Most aspects of building work
undertaken

Small plumbing jobs

Call for a free quote or advice

Shane 07943211869

shane.podmore@gmail.com



Race Night is back for 2025.

The date for your diary is Saturday 29th March.

It's a great fun night. Bar, pasty supper and lots of laughs. Hope to see you there.

Suzanne Rothwell 07836 634 848

Poppy Appeal 2024

Yet again a successful year for the poppies. As things progress and more payments are made using QR codes I am pleased to say that we made an exceptional £1390.35 which is the total I banked at Lloyds this morning, on top of that is the extra in QR payments. I agree that it makes life a great deal easier if there is a good internet service.

After last year when the cashless did not work too well in the square. It is far easier dealing only in cash but I realise that we are becoming a cashless society. Alternatives are easier and more direct.

I would also like to thank the scouts for their part in the service. It was lovely to see so many military uniforms and medals on show. It certainly made it all seem fitting for those who have or have not endured conflict.

Thanks to all.

Fiona Clarke Poppy Appeal Organiser



PEST CONTROL DIVISION



KIERON 07977 648791



email: greenrockgap@gmail.com

 **ABACUS**
Stone Conservation

**Masonry & Conservation
Specialists**

Repairs to Listed
and Historic Properties
Traditional Lime Mortar Repointing
Brick Repairs - Walling

Clyst St. George, Near Exeter

Tel: 01392 879824 Mob: 07825 698507

Email: info@abacusstoneconservation.co.uk

Web: www.abacusstoneconservation.co.uk

Window Cleaner

High reach hot water system
Frames and doors all in
Gutters/Fascias Cleaned

For that personal service

**Sean
Harris**
814963
07737 419077



©2011 Clippings.com

SHORT MAT BOWLS



We play Short Mat Bowls every Wednesday at 7.00 pm. We are looking for new members to join us please. Come along to the Victory Hall. You will be very welcome. Bowls can be provided.

David Rastall.



PLANNING & PROPERTY EXPERTS

07896 665903

randall@buildconsultants.co.uk

**Building Design & Planning Permission
Commercial and Residential**

Hot Desks for rent daily
Co-working Space

Experts in nature

Whimpe-based tree surgeon

Dendrologic
Arboricultural solutions

Arboriculture
Tree pruning + removal
Hazardous trees
Tree health
Planting and establishment

Ecology
Habitat management
Advice
Survey

Contact Dylan on: 07828 013 486
dendrologictrees@protonmail.com

Always FREE delivery
to Whimble
(no min. order value)



Have you tried our
NEW 'Devon Dapple'
cloudy cider yet ?



Traditional, Cloudy, Fruit and Low-Alcohol

CIDER - available in bottles,
3L pouches and 20L bag-in-boxes.

APPLE JUICE - still and sparkling

From our ancient
Whiteways Orchard in Whimble

THE EXE GIN
Grumblebee Honey Spiced Rum



Order online:

www.courtneysdrinks.co.uk

01404 890093 (Mon-Fri / 9am-5pm)

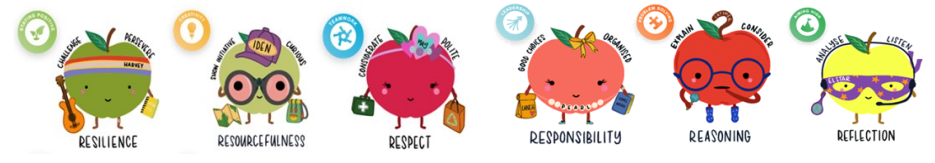
Also available at:

Jack in the Green, New Fountain Inn,
Whimble Cricket Club and Whimble Stores

'Whimble's very own drinks producer'



Scan me to order



In all the time I have been teaching, I cannot recall a wetter start to the school year. Despite the weather, the children have all had Forest School sessions over at the orchard.



We are going to hold a community session on Saturday 25th January at the orchard which will include learning how to lay a hedge alongside other tasks. Please look out for more information – it would be great to see you all.

Reading continues to be a pivotal part of the school day – through class readers, group and individual reading and writing sequences, books play an integral part to each and every day. It is well-known that people who read more fluently and widely, have better life chances and tend to have better-paid jobs. Sadly, with more technology and other things available to children, there has been a steady decline in reading at home. This is where extended families and friends can support – reading a book to or with a child can benefit all parties – it supports good mental health and can be a great way to spend time on a cold miserable day.

Each class chose a country to celebrate European Language Day at the end of September. This involved learning more about the country including its language and culture.

Our annual apple pick and then apple pressing day went down well with all the children and we took over half a tonne of apples to Darts Farm just before half-term.

The focus of this half-term, as always, is Christmas. Children are busy making Victorian items to decorate our tree at Killerton. There will be two Carol Services, a nativity, Christmas fair and dinner, and of course our Elf Run to look forward too.

The children and staff at Whimble Primary School would like to wish you all a Merry Christmas and Happy New Year.

Mrs Carole Shilston, Headteacher

To start the term the school has been focusing on Remembrance Day, apple picking and apple pressing.

We did apple picking on the 18th of October. Willow class (Yr 5 & Yr 6) went with Elm class (Reception & Yr 1), Beech class (Yr 4 & Yr 5) went with Oak class (Yr 3 & Yr 4) and Ash class (Yr 1 & Yr 2). We all went throughout the afternoon. Afterwards, on the 8th of November, Mr Palmer brought the apple pressing machine to make the apples into apple juice. It was delicious, we loved it!



Four children from Willow class have gone every other week to Clyst Vale school to do some maths challenges. Last week we did the 4 fours challenge where we had to use 4 fours to make the numbers from 0-20 for 1 hour. We all enjoyed it with children from another school named Clyst Saint Mary.

On Friday 15th November, the whole school wore spotty, stripy, sporty, multi coloured, or PJs for children in need. We did some challenges with everyone taking part and the focus was wheels. We each brought in a donation from 50p to £1 or more.



On Monday we did the 2 minute silence as well as selling poppy related items. We would like to thank the children in Willow class for staying behind for 10 minutes to sell poppies. We raised over £130 pounds for the Royal British Legion.

By Eleanor Butler, Amelie Handley and Maisie Knowles. (Year 6)





SARAH JANE'S
UNISEX HAIRDRESSERS • WHIMPLE

Open Tuesdays to Saturdays from 9am

To book an appointment ring **01404 823400** or **07494 365547**
or book through my Facebook page

New Inn Cross, Whimble EX5 2TT. Tel 01404 823 400



Sat.

O'DELL PLUMBING & HEATING

jasonodell.plumbing@gmail.com

07974 818833

FOR ALL TYPES OF GAS AND OIL HEATING INSTALLATIONS.

BOILER SERVICE, REPAIR & BREAKDOWNS.

BATHROOMS & SHOWERS.

UNVENTED HOT WATER SYSTEMS.

UNDERFLOOR HEATING.



4094

Organisations in Whimble

Devon County Councillor (iain.chubb@devon.gov.uk)	
Iain Chubb	07932 459595, 01297 35468
East Devon District Councillor:	
Todd Olive (toddolive@eastdevon.gov.uk)	07925 847933
Parish Council (whimbleparishcouncil@gmail.com)	
<i>Chairman:</i> Alan McArthur (cllramawpc@gmail.com)	01404 823079
<i>Clerk tbc Parish Council:</i> Amy Tregellas	
Primary School (admin@whimble-primary.devon.sch.uk)	
<i>Headteacher:</i> Carole Shilston	822584
<i>Chair of Governors:</i> Jackie Enright	
Whimble School PTA (Whimble.pta@gmail.com)	
St. Mary's Church	
<i>Parish Priest:</i> Rev. Marc Kerslake	822525
<i>Impact Cell:</i> Helen Bowker	823193
<i>Bellringers:</i> Andrea Young	07833 552855
Book Group	
Tanya Mooney	823326
Cricket Club (jameswoollam@gmail.com)	
<i>Booking Secretary:</i> James Woollam	07989 234372
Football Club	
<i>Chairman:</i> Victoria Kendrew	07966 550260
<i>Secretary:</i> Lee Wheaton	077341 52120
Front Row Club	
<i>email:</i> frontrowclub@gmail.com	
History Society	
<i>Secretary:</i> Jenny Fells	822104
Over Sixties Club	
<i>Chairman:</i> Arthur Iball	822905
<i>Secretary:</i> Beryl Iball	822905
Pre-School & Toddler Group (www.whimblepreschool.com)	
<i>Chair:</i> Hayley Seldon	07736 272668
<i>Information:</i> Jo Sibley 07794 652549 or admin@whimblepreschool.com	
Recreation Trust	
<i>Knowle Cross Sports Ground:</i> Roger Smith	822244
Table Tennis Club	
Chris Beer	07787 544192
Tennis Club	
<i>Secretary:</i> Viv Brown	07876 653264
<i>Treasurer:</i> Glenn Starkey	07967 698600
Victory Hall	
<i>Chair:</i> Sue Ayres	823082
<i>Secretary:</i> Di Wilkins	07974 468513
<i>Booking Sec:</i> Ali Tierney	07778 681280
Whimble Fest	
<i>Contact:</i> Sue Turner	sue.turner1@sky.com
Whimble and District Gardening Club	
<i>Chairman:</i> Paul Wilson	822744
Whimbletons	
Cathy Bartlett-Horwood	823944
Womens Institute	
<i>President:</i> Sarah Hogg	822886
Whimble and Broadclyst Young Farmers:	
<i>Secretary:</i> Jack Tucker	07724 390839
Whimble Scouts	
<i>Group Scout Leader:</i> Paul Lambell (paullambell03@gmail.com)	
<i>Scout Hut and Marquee Booking:</i> Alex Spry (alexspry@yahoo.co.uk)	

The Whimble News Team

whimblenews@gmail.com

WN153

Editor

Samantha Upton

Contact and Advertising

Jenny Fells

Production

Bob Scanlan
Sally Wilde
Sarah Thackeray
Alex Tooze

Delivery

Cathy Sharkey

Treasurer

Miles Leonard

Community Diary

Louise Scanlan
whimblediary@gmail.com

Apsleys

CHARTERED
ACCOUNTANTS

Accountancy
Taxation
Payroll

Probate Services
R&D Tax Credits
Corporate Finance
Company Secretarial

tiverton@apsleys.com
01884 257725



Shelley
Spry

Tale Valley Care

Unit 6 Lees Meadow
Talatun EX5 2SG
info@talevalleycare.co.uk
07873 240459

Providing Personal Care Services in your home

Other services offered include:

Washing
Ironing
Shopping
Driving to appointments
Chaperone

NVQ qualification in lead adult care
Insured and DBS checked



**TIME
TO
DREAM
BIG**

HALLANDSCOTT.CO.UK



CONTACT OUR OFFICE
TODAY FOR A
FREE VALUATION
AND MORE INFORMATION
ABOUT OUR SERVICES

CALL: 01404 812000
VISIT: HALLANDSCOTT.CO.UK

the Jack *in the* Green

DECEMBER

CHRISTMAS LUNCH PARTY MENU

Curried Parsnip & Apple Soup

Smoked Salmon, Lemon Mayonnaise & Capers

Chicken Liver Parfait, Cranberry Compote, Toasted Brioche

Panko Breaded Goats Cheese, Beetroot Purée & Pickled Shallots

Ham Hock Scrumpet, Garlic Butter, Cornichon, Parsley Sauce

West Country Sirloin of Beef with Yorkshire Pudding
(Served rare)

Cider Braised Belly Pork, Roast Apple Purée

Roast Turkey with Traditional Trimmings

Traditional Nut Roast with Homemade Tomato Sauce

Fillet of Sea Bream with Leeks & Lemon Butter Sauce

Served with chef's selection of seasonal vegetables

Treacle Tart with Blood Orange Sorbet

Sticky Toffee Pudding with Butterscotch Sauce & Clotted Cream

Black Forest Trifle

Traditional Christmas Pudding with Brandy Sauce

Raspberry Vanilla Crème Brûlée

Trio of Local Cheese & Biscuits with Homemade Chutney

Lemon & Pine Nut Parfait, Honey Whiskey Cream

Tea, Coffee & Mince Pies

2 COURSES £30 | 3 COURSES £38

Tel: 01404 822240

www.jackinthegreen.uk.com

